



**Mark A. Hackenburg, RLA**

Principal  
e: mhackenburg@rgsassociates.com  
c: 717.951.9210

53 West James Street  
Suite 101  
Lancaster, PA 17603  
717.715.1396  
www.rgsassociates.com



**Beau Brown**  
Associate Broker  
Sales Executive

3528 Concord Road  
York, PA 17402  
Phone: 717-843-5555  
Cell: 717-364-4846  
Fax: 717-843-5550  
bbrown@bennettwilliams.com  
www.BennettWilliams.com



LAND PLANNING  
SITE ANALYSIS  
LANDSCAPE ARCHITECTURE  
ENGINEERING

**H. EDWARD BLACK and ASSOCIATES, Ltd.**  
2403 North Front Street □ Harrisburg, Pennsylvania 17110

**H. Edward Black, RLA, FASLA** Telephone (717) 233-1026  
President Fax (717) 233-2192  
edward.black@heblack.com



**Daniel Dutcavich**  
Commercial Sales / Leasing

Office (717) 731-1990 x3005  
Cell (717) 364-6491  
Fax (717) 731-8765  
ddutcavich@landmarkcr.com

20 Erford Road, Suite 215  
Lemoyne, PA 17043  
www.landmarkcr.com



**Thomas P. Wilson, P.E.**  
Principal - LEED® Green Associate

470 Friendship Road, Suite 100  
Harrisburg, PA 17111  
P: 717.635.2835  
C: 717.571.9403  
twilson@kandwengineers.com  
www.kandwengineers.com



**David J. Remmel, P.E., SIO**  
President

Office (717) 731-1990 x3003  
Cell (717) 514-9469  
Fax (717) 731-8765  
remmeld@landmarkcr.com

20 Erford Road, Suite 215  
Lemoyne, PA 17043  
www.landmarkcr.com



**DENNIS W. AUKER, AICP**  
TRANSPORTATION & ENVIRONMENTAL PLANNING

935 Herman Drive  
Mechanicsburg, PA 17055



Telephone: (717) 697-9344  
Cell Phone: (717) 571-7571  
Email: dwauger@comcast.net  
www.aukerconsulting.com



2840 Liberty Ave.  
Suite 403  
Pittsburgh, PA 15222  
ae-7.com

BUSINESS DEVELOPMENT MANAGER  
**THOMAS WHITE, PE**  
tom.white@ae-7.com

MOBILE + 1 412 660 1183  
PHONE + 1 412 932 2044  
FAX + 1 412 932 2045



**Matthew P. Davis, S.I.T.**  
LEED® Green Associate

470 Friendship Road, Suite 100  
Harrisburg, PA 17111  
717.635.2835  
mdavis@kandwengineers.com  
www.kandwengineers.com



**Nicole Seuffert**

Business Development  
e: nseuffert@rgsassociates.com  
c: 717.847.2655

53 West James Street  
Suite 101  
Lancaster, PA 17603  
717.715.1396  
www.rgsassociates.com

**Michael Baker**

**INTERNATIONAL**

**Stephen M. Hammel**

*VICE PRESIDENT  
BUSINESS DEVELOPMENT*

100 Airside Drive, Moon Township, PA 15108  
o: 412-375-3111 c: 412-225-5250  
shammel@mbakerintl.com

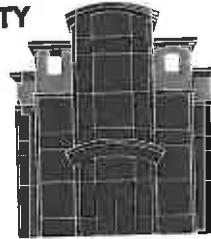
**LATUS**

**LATUS COMMERCIAL REALTY**

**LAURA J. MARTIN**

*Broker/Owner/CCIM/CPM®/WBE*

3920 Market Street  
Suite 351  
Camp Hill, PA 17011  
Tel. 717.737.2422  
Fax 717.737.2433  
Cell 717.919.7888  
lmartin@latusrealty.com



[www.latusrealty.com](http://www.latusrealty.com)